



Moore County Schools

MULTI-YEAR STUDENT ASSIGNMENT PLAN – DRAFT 2

MAY 6, 2019

LAURA EVANS AND MICHAEL MILLER, NUMERIX LLC

numerix,y)solutions

Overview

- Review of Guiding Principles and Desired Outcomes
- Process
- General Comments from the Advisory Committee and Community meetings
- Transportation Concerns
- Allowable Transfers
- Implementation Timeline
- Draft 2: Data Tables and Maps
- Addendum

Guiding Principles

- THERE IS NO INTENDED PRIORITY OF GUIDING PRINCIPLES
- SOME GUIDING PRINCIPLES MAY OVERLAP
- SOME GUIDING PRINCIPLES MAY CONFLICT
- SOME ASSIGNMENT SOLUTIONS MAY NOT REALIZE GUIDING PRINCIPLES TO THE FULL EXTENT
- GUIDING PRINCIPLES ARE DEPENDENT ON THE SCHOOLS IMPACTED BY THE ASSIGNMENT PLAN

BALANCE

To the extent possible, the assignment proposal should provide balance in: building utilization, program opportunities, and student demographic factors.

PLANNING

To the extent possible, the assignment proposal should utilize up-to-date school and planning data to provide a stable assignment plan that is forward-looking and responsive to community and student needs.

EFFICIENCY

To the extent possible, the assignment proposal should seek to optimize operational efficiency.

COMMUNITY

To the extent possible, the assignment proposal process should promote transparency and be sensitive to the needs of our families, communities and the district.

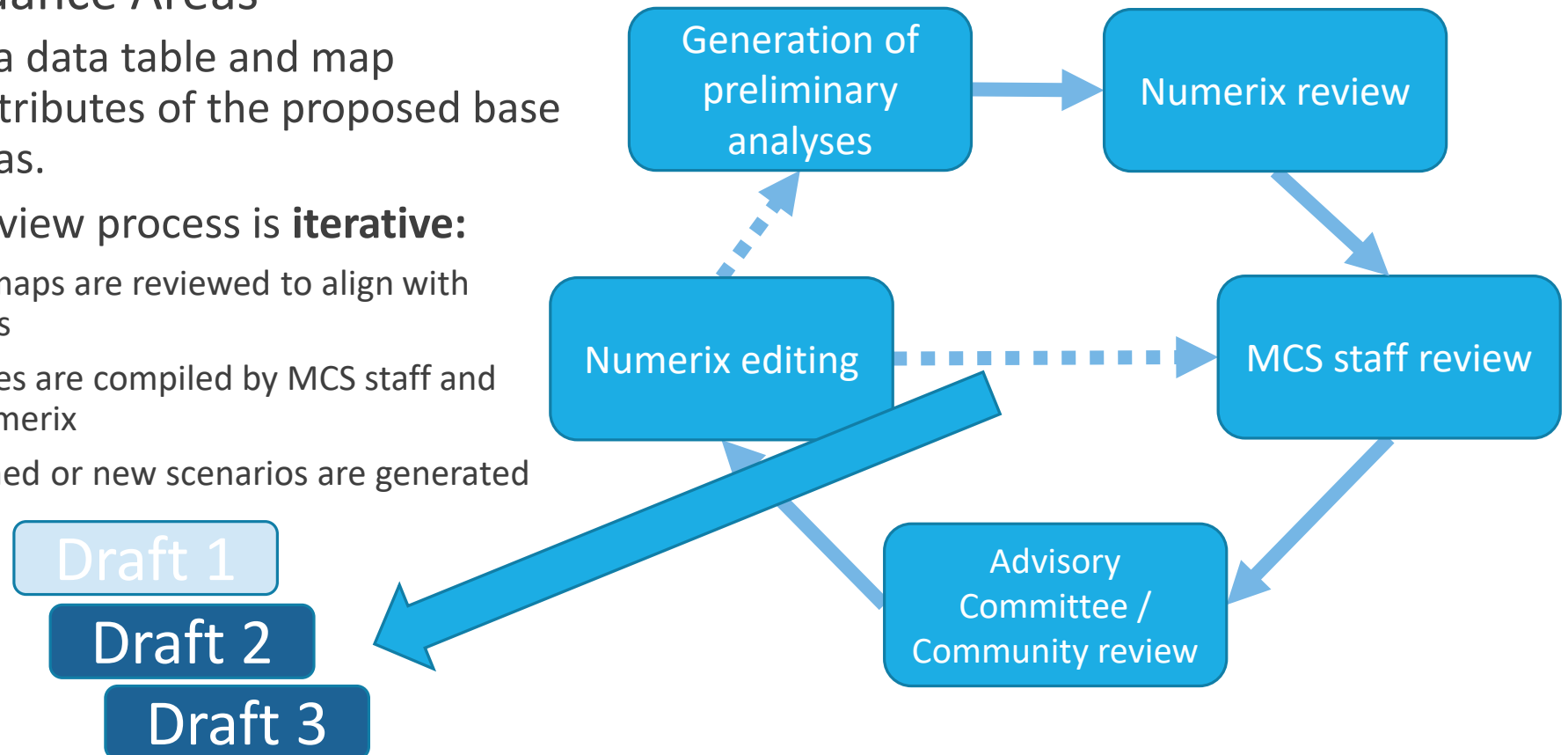
Desired Outcomes for the Student Assignment Plan

- Develop assignment plans for three Elementary Schools opening 2020-21 and 2021-22
- Resolve unfinished business from 2019-20 Area I assignment plan
- Address, to the extent possible, utilization issues among elementary and middle schools
- Balance, to the extent possible, demographics among elementary and middle schools

Process

- Creating Attendance Areas

- A “scenario” is a data table and map summarizing attributes of the proposed base attendance areas.
- The scenario review process is **iterative**:
 - Data tables and maps are reviewed to align with Guiding Principles
 - Suggested changes are compiled by MCS staff and forwarded to Numerix
 - Edits are performed or new scenarios are generated



General Comments from the Draft 1 Feedback

- Concerns that additional buses may be needed and the lack of drivers
- Concerns around travel time/longer bus rides
- Concerns around split feeder patterns
- Concerns around traffic patterns, i.e., challenges and changes
- Concerns regarding split neighborhoods and utilization versus efficiency
- Concerns around split communities
- Concerns about implementation timeline
- Address as much as possible allowing kids to change schools early so they can start at their new school
- Continue to look at balance, utilization, demographics
- Questions about how the transfer policy will apply
- Concerns regarding school change impact on military families

Transportation Concerns

- Community feedback included concerns about traffic congestion and long travel times for some areas in Draft 1. Draft 2 addresses some of these issues.
- Increasing efficiency by addressing these transportation concerns may have impact on other Guiding Principles such as balancing utilization, community and stability (feeder patterns).
- MCS is pursuing a traffic analysis to measure potential changes in traffic patterns that may occur due to the assignment plan.

Comparison: Draft 1 and Draft 2

DRAFT 1

- Balance district-wide utilization for elementary and middle schools and maintain elementary to middle and middle to high school feeders to the extent possible

DRAFT 2

- Consider traffic congestion and student travel impacts, while addressing utilization issues and considering feeder patterns.

Draft 1 and Draft 2 assume:

- The new Aberdeen area and Southern Pines area elementary schools will open in 2020-21 and the new Pinehurst ES opens in 2021-22. All new elementary schools have capacity = 800.
- Modular classroom unit will be moved to Cameron ES by 2021-22, increasing Cameron's capacity to 400 seats
- The target year for all maps and data tables is 2022-23 after all changes are in place

Allowable Transfers

Proactive transfers

- **Example:** A parent who is aware that their child will attend Cameron Elementary in the Fall of 2021 applies for a transfer to have his/her student begin at Cameron Elementary in the Fall of 2020.
- **Example:** A parent who is aware that their child will attend Southern Middle School in the Fall of 2021 applies for a transfer to have his/her student begin at Southern in the Fall of 2020.
- **Example:** A parent who is aware that their child will attend North Moore High School in the Fall of 2021 applies for a transfer to have his/her student begin at North Moore in the Fall of 2020.

Rising grade transfers

- Rising 5th, 8th, 11th and 12th grade students could be allowed to remain at their current school through the transfer process. Siblings of eligible students in this category are not considered allowable transfers.
- Delays full implementation of student assignment plan but allows for stability for students in final years of grade span

Both situations require parents to provide their own transportation

Timeline for Implementation of Multi-Year Student Assignment Plan

August 2020 *AES; *SPES;
RES; HES; WES; EMS; NMHS;
Complete MES



August 2021 **PES/SPES; VLES;
CAM; CES; SFLES; WEES; WPES;
WPMS; SMS; NCMS; CCMS; PHS;
UPHS

*New Combined Primary & Elementary Schools

**New Pinehurst Elementary and second phase of SPES

Draft 2: ES

Current 2019-20	Minority % 2019-20	Capacity 2019-20	Utilization 2019-20	Capacity 2022-23	Utilization 2022-23	Prof - ELA 2017-18
Aberdeen PS/ES	71%	725	76%	800	71%	47%
Cameron ES	35%	284	96%	400	76%	58%
Carthage ES	27%	440	86%	440	94%	62%
Highfalls ES	24%	228	76%	228	73%	62%
McDeeds Creek ES	22%	800	59%	800	67%	72%
Pinehurst ES	23%	367	166%	800	81%	81%
Robbins ES	59%	600	60%	600	61%	47%
Sandhills Farm Life ES	21%	550	71%	550	80%	67%
Southern Pines PS/ES	58%	990	66%	800	83%	56%
Vass-Lakeview ES	33%	600	87%	600	100%	62%
West End ES	27%	500	114%	500	115%	75%
West Pine ES	29%	600	100%	600	117%	73%
Westmoore ES	20%	264	69%	264	63%	63%
		6948	83%	7382	83%	

Minority	Util - 2022-23	Prof - ELA
Max >	71%	117%
Min >	20%	61%
Range >	51	56

Draft 1 - ES 2022-23	Minority % 2019-20	Capacity 2019-20	Utilization 2019-20	Capacity 2022-23	Utilization 2022-23	Prof - ELA 2017-18
Aberdeen Area ES	65%	725	71%	800	68%	49%
Cameron ES	37%	284	116%	400	92%	54%
Carthage ES	27%	440	83%	440	91%	64%
Highfalls ES	20%	228	87%	228	85%	61%
McDeeds Creek ES	26%	800	81%	800	89%	70%
Pinehurst ES	22%	367	178%	800	88%	79%
Robbins ES	61%	600	71%	600	72%	48%
Sandhills Farm Life ES	20%	550	68%	550	76%	68%
Southern Pines Area ES	64%	990	64%	800	82%	55%
Vass-Lakeview ES	32%	600	78%	600	89%	65%
West End ES	24%	500	102%	500	104%	74%
West Pine ES	33%	600	69%	600	80%	76%
Westmoore ES	22%	264	76%	264	70%	60%
		6948	83%	7382	83%	

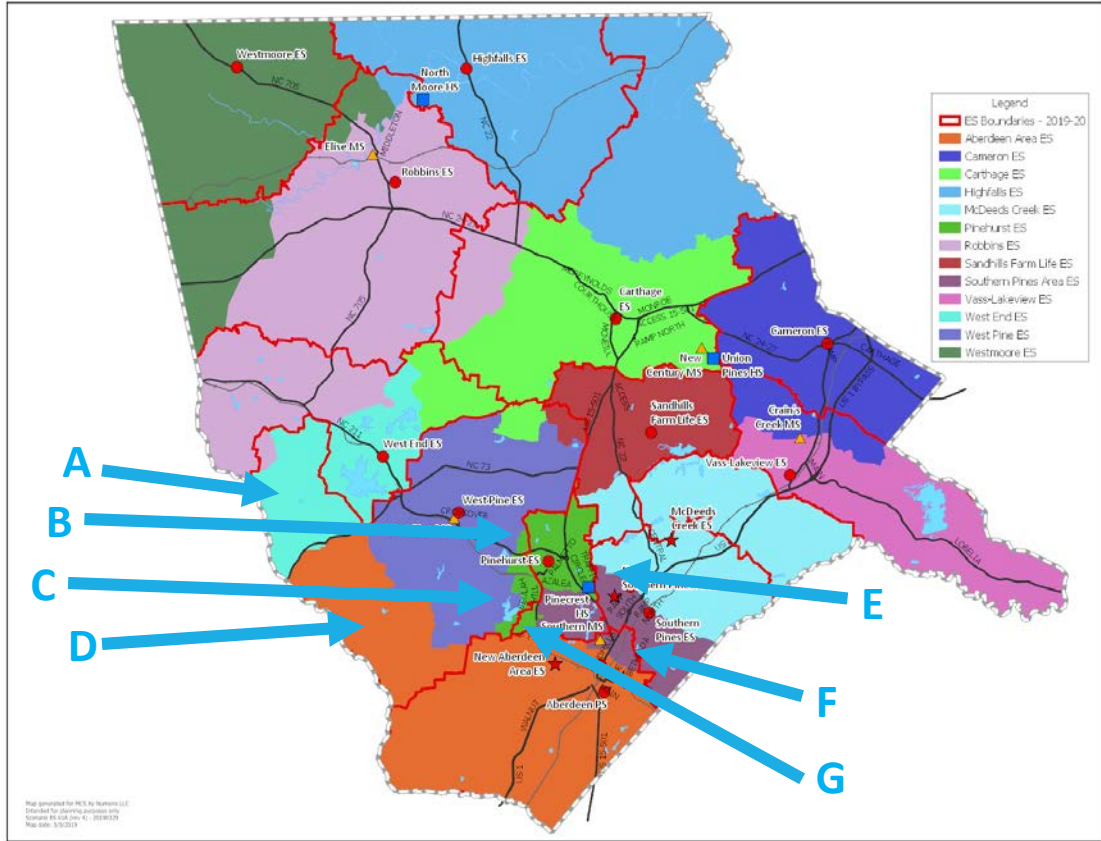
Minority	Util - 2022-23	Prof - ELA
Max >	65%	104%
Min >	20%	68%
Range >	45	37

Draft 2 - ES 2022-23	Minority % 2019-20	Capacity 2019-20	Utilization 2019-20	Capacity 2022-23	Utilization 2022-23	Prof - ELA 2017-18
Aberdeen Area ES	70%	725	80%	800	75%	48%
Cameron ES	37%	284	116%	400	92%	54%
Carthage ES	27%	440	83%	440	91%	64%
Highfalls ES	20%	228	87%	228	85%	61%
McDeeds Creek ES	24%	800	69%	800	77%	71%
Pinehurst ES	18%	367	188%	800	94%	82%
Robbins ES	61%	600	71%	600	72%	48%
Sandhills Farm Life ES	20%	550	68%	550	76%	68%
Southern Pines Area ES	55%	990	71%	800	90%	60%
Vass-Lakeview ES	32%	600	78%	600	89%	65%
West End ES	22%	500	97%	500	97%	78%
West Pine ES	40%	600	62%	600	71%	67%
Westmoore ES	22%	264	76%	264	70%	60%
		6948	83%	7382	83%	

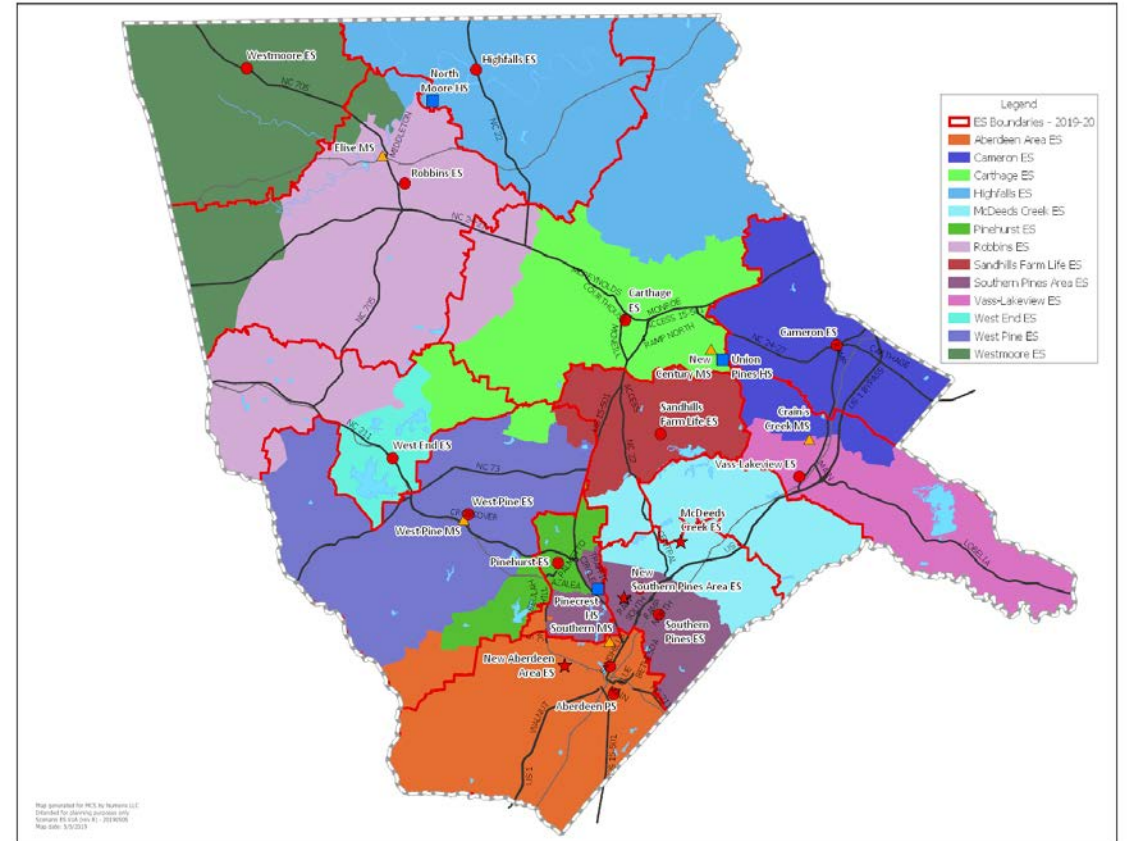
Minority	Util - 2022-23	Prof - ELA
Max >	70%	97%
Min >	18%	70%
Range >	52	27

NOTE: All information presented here, including maps and data tables, represents base assignment scenarios that are not approved by the MCS Board of Education. All information presented here is intended for planning purposes only.

Draft 2: ES



Draft 1



Draft 2

NOTE: All information presented here, including maps and data tables, represents base assignment scenarios that are not approved by the MCS Board of Education. All information presented here is intended for planning purposes only.

Draft 2: MS

Current 2019-20	Minority % 2019-20	Capacity 2019-20	Utilization 2019-20	Capacity 2022-23	Utilization 2022-23	Prof - ELA 2017-18
Crains Creek MS	34%	478	86%	478	86%	59%
Elise MS	55%	270	83%	270	75%	47%
Highfalls ES	22%	123	86%	123	82%	62%
New Century MS	25%	700	94%	700	94%	69%
Southern MS	63%	700	97%	700	89%	51%
West Pine MS	25%	700	124%	700	140%	76%
Westmoore ES	27%	136	86%	136	77%	63%
		3107	99%	3107	99%	

Minority	Util - 2022-23	Prof - ELA
Max > 63%	Max > 140%	Max > 76%
Min > 22%	Min > 75%	Min > 47%
Range > 41	Range > 65	Range > 30

Draft 1 - MS 2022-23	Minority % 2019-20	Capacity 2019-20	Utilization 2019-20	Capacity 2022-23	Utilization 2022-23	Prof - ELA 2017-18
Crains Creek MS	33%	478	95%	478	93%	60%
Elise MS	55%	270	92%	270	87%	48%
Highfalls ES	19%	123	108%	123	105%	61%
New Century MS	27%	700	94%	700	94%	69%
Southern MS	51%	700	111%	700	111%	62%
West Pine MS	32%	700	95%	700	103%	68%
Westmoore ES	31%	136	93%	136	83%	60%
		3107	99%	3107	99%	

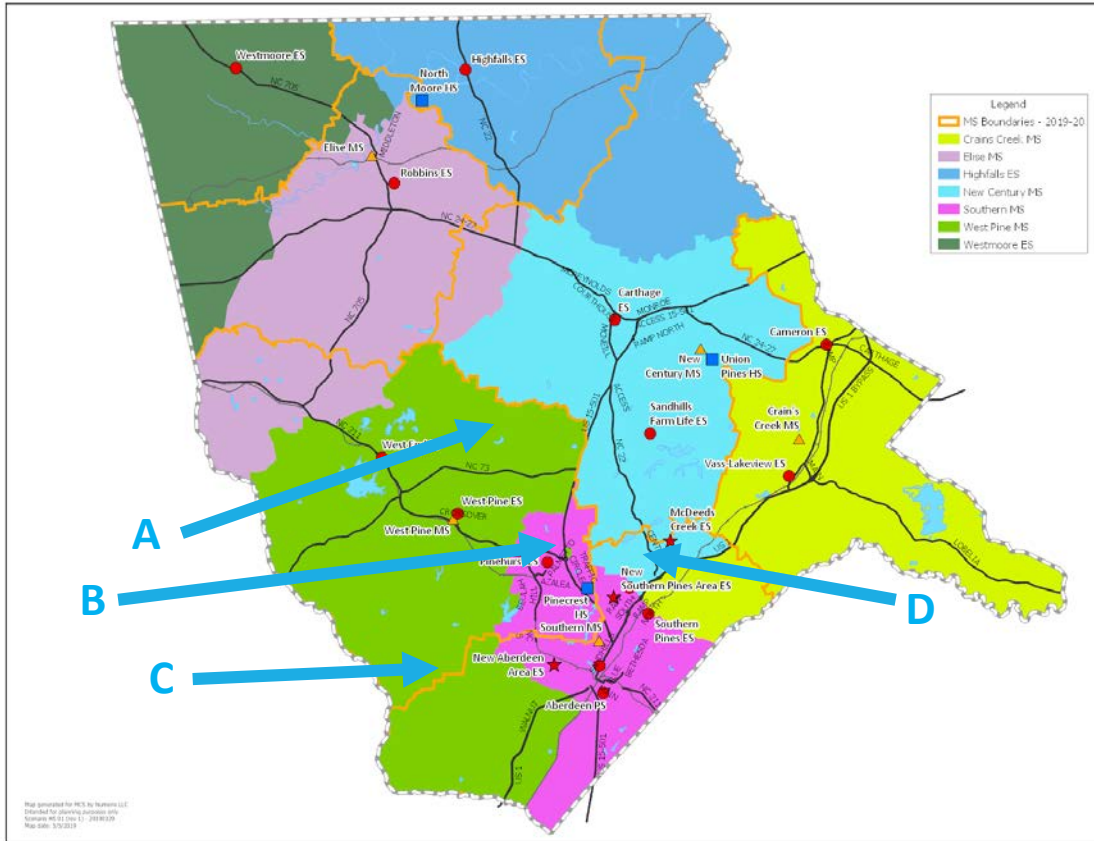
Minority	Util - 2022-23	Prof - ELA
Max > 55%	Max > 111%	Max > 69%
Min > 19%	Min > 83%	Min > 48%
Range > 36	Range > 28	Range > 21

Draft 2 - MS 2022-23	Minority % 2019-20	Capacity 2019-20	Utilization 2019-20	Capacity 2022-23	Utilization 2022-23	Prof - ELA 2017-18
Crains Creek MS	35%	478	102%	478	100%	60%
Elise MS	55%	270	92%	270	87%	48%
Highfalls ES	19%	123	108%	123	105%	61%
New Century MS	25%	700	90%	700	90%	70%
Southern MS	55%	700	114%	700	110%	57%
West Pine MS	25%	700	92%	700	103%	76%
Westmoore ES	31%	136	93%	136	83%	60%
		3107	99%	3107	99%	

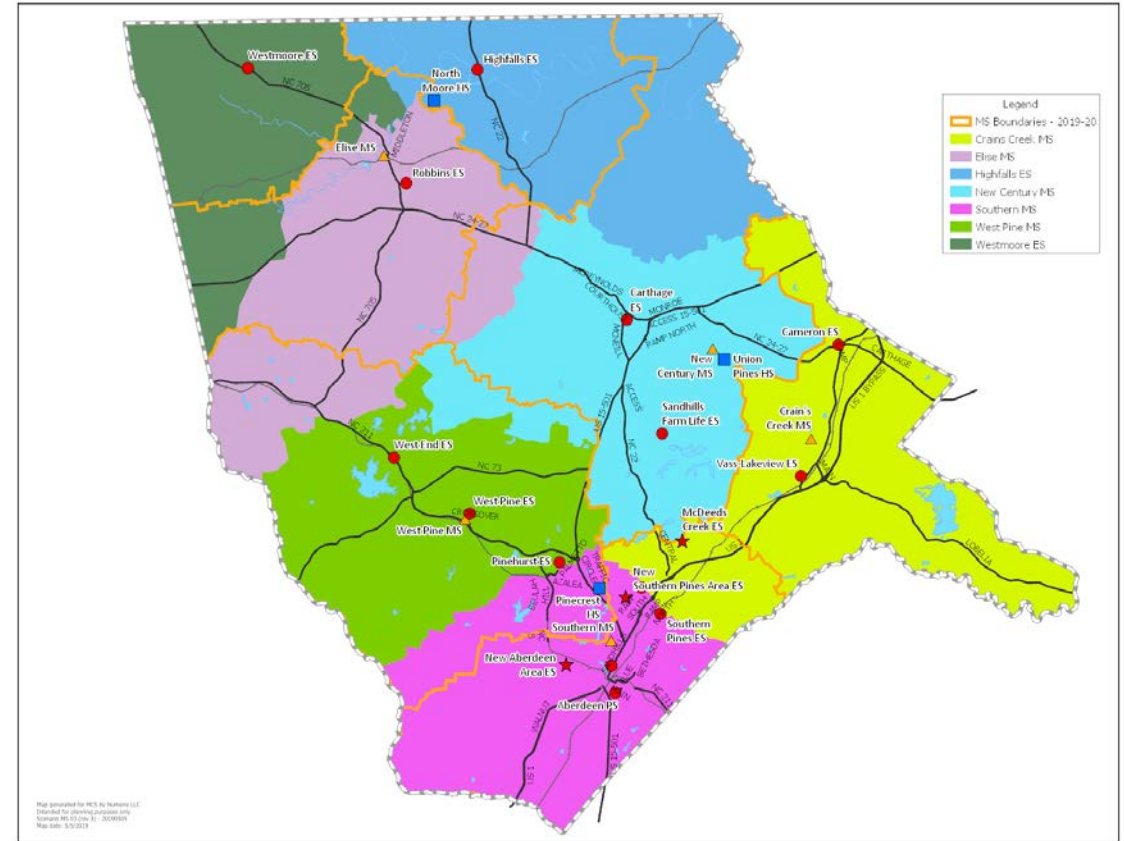
Minority	Util - 2022-23	Prof - ELA
Max > 55%	Max > 110%	Max > 76%
Min > 19%	Min > 83%	Min > 48%
Range > 36	Range > 27	Range > 27

NOTE: All information presented here, including maps and data tables, represents base assignment scenarios that are not approved by the MCS Board of Education. All information presented here is intended for planning purposes only.

Draft 2: MS



Draft 1





Draft 2



NOTE: All information presented here, including maps and data tables, represents base assignment scenarios that are not approved by the MCS Board of Education. All information presented here is intended for planning purposes only.

Draft 2: HS

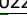

Current 2019-20	Minority % 2019-20	Capacity 2019-20	Utilization 2019-20	Capacity 2022-23	Utilization 2022-23	Prof - ELA 2017-18
North Moore HS	41%	559	97%	559	106%	54%
Pinecrest HS	38%	1650	125%	1650	129%	65%
Union Pines HS	27%	1068	127%	1068	135%	64%
		3277	121%	3277	127%	

Minority	Util - 2022-23	Prof - ELA
Max > 41%	Max >  135%	Max > 65%
Min > 27%	Min >  106%	Min > 54%
Range > 14	Range > 29	Range > 11

Draft 1 - HS 2022-23	Minority % 2019-20	Capacity 2019-20	Utilization 2019-20	Capacity 2022-23	Utilization 2022-23	Prof - ELA 2017-18
North Moore HS	42%	559	107%	559	116%	54%
Pinecrest HS	37%	1650	123%	1650	127%	65%
Union Pines HS	27%	1068	125%	1068	133%	65%
		3277	121%	3277	127%	

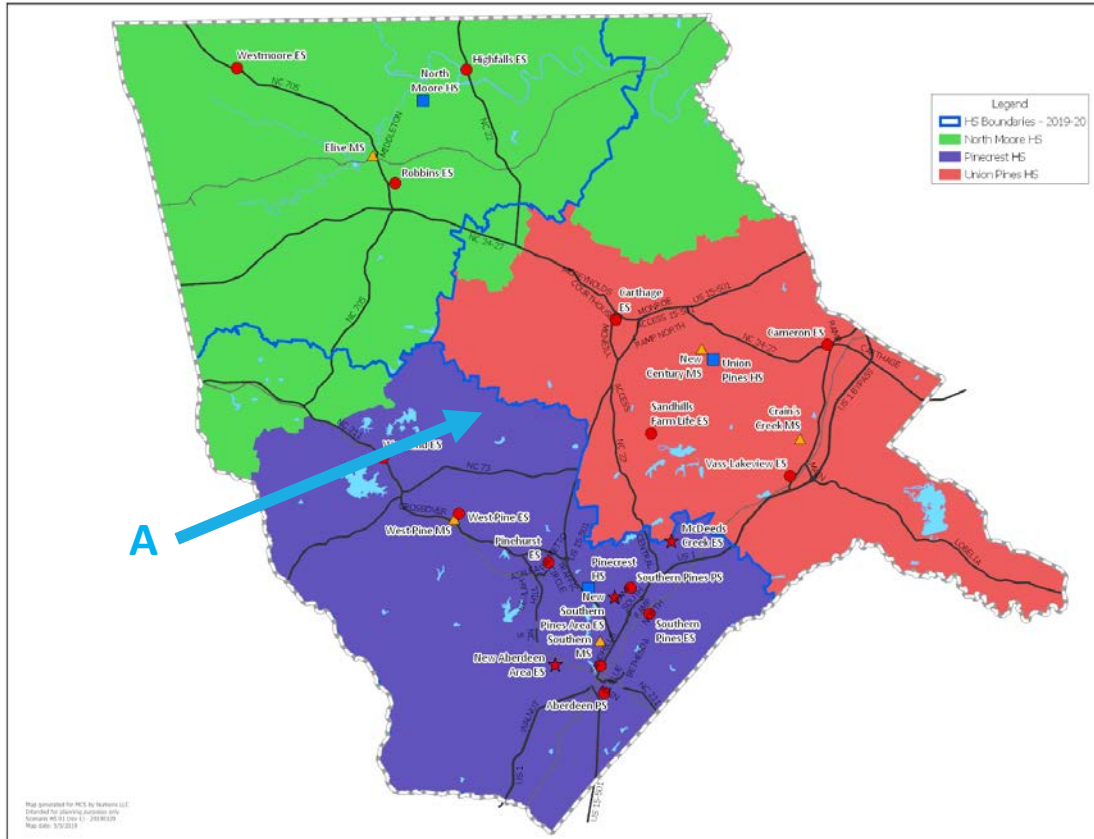
Minority	Util - 2022-23	Prof - ELA
Max > 42%	Max >  133%	Max > 65%
Min > 27%	Min >  116%	Min > 54%
Range > 15	Range > 17	Range > 11

Draft 2 - HS 2022-23	Minority % 2019-20	Capacity 2019-20	Utilization 2019-20	Capacity 2022-23	Utilization 2022-23	Prof - ELA 2017-18
North Moore HS	42%	559	108%	559	117%	54%
Pinecrest HS	37%	1650	123%	1650	126%	65%
Union Pines HS	26%	1068	126%	1068	134%	65%
		3277	121%	3277	127%	

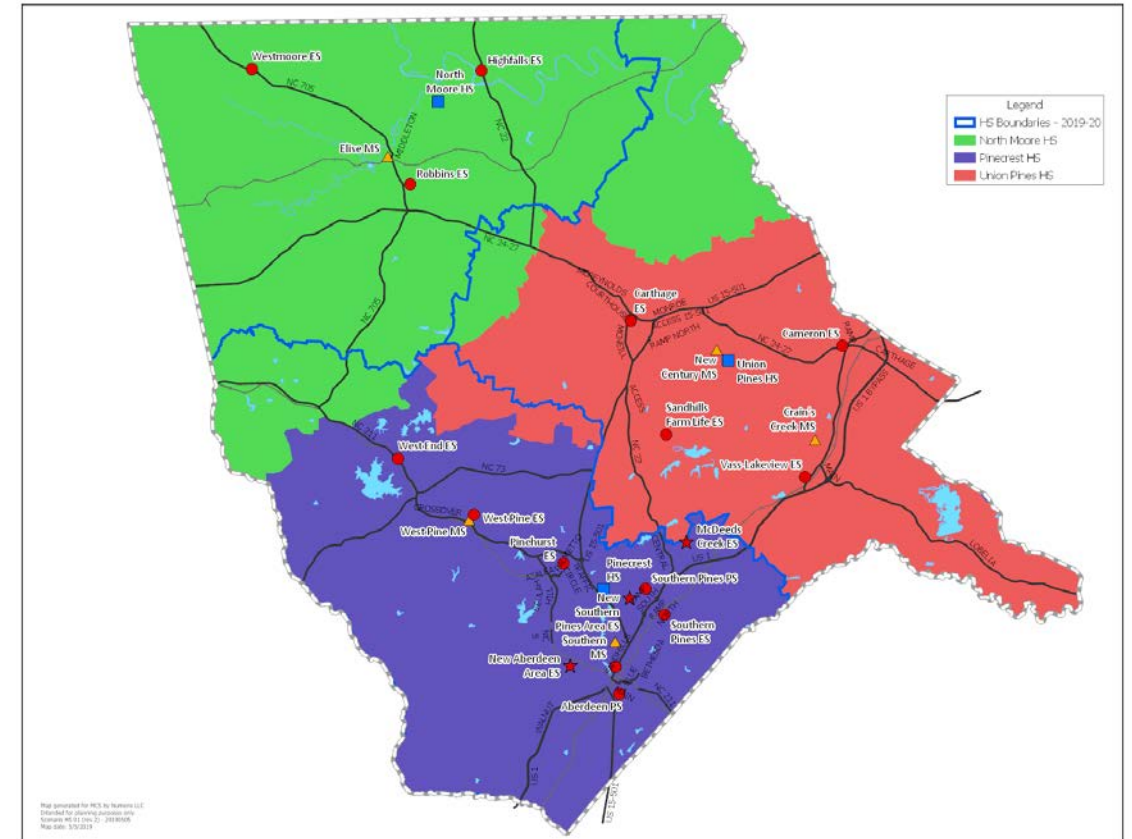
Minority	Util - 2022-23	Prof - ELA
Max > 42%	Max >  134%	Max > 65%
Min > 26%	Min >  117%	Min > 54%
Range > 16	Range > 16	Range > 11

NOTE: All information presented here, including maps and data tables, represents base assignment scenarios that are not approved by the MCS Board of Education. All information presented here is intended for planning purposes only.

Draft 2: HS



Draft 1



Draft 2

NOTE: All information presented here, including maps and data tables, represents base assignment scenarios that are not approved by the MCS Board of Education. All information presented here is intended for planning purposes only.

Feeder Patterns

DRAFT 1

- 4 Elementary Schools will feed 2 different Middle Schools
- 2 Middle Schools will feed 2 different High Schools

DRAFT 2

- 4 Elementary Schools will feed 2 different Middle Schools
- 1 Middle School will feed 2 different High Schools

Assignment Planning Timeline

- February 4 – Board Work Session
- February 13, 5:30 – Initial Advisory Committee meeting at NCMS
- March 5, 5:30 – Advisory Committee meeting at NCMS
- March 18, 5:30 – Advisory Committee meeting at NCMS
- April 1 – Board Work Session: Presentation of Draft 1 of Multi-year Student Assignment Plan
- April 2, 6:00 – Public Engagement/Input Meetings. Areas I & Area II at New Century Middle School
- April 3, 6:00 – Public Engagement/Input Meetings. Area III at Southern Middle School
- April 9, 5:30 – Advisory Committee meeting at NCMS
- April 23, 5:30 – Advisory Committee meeting at NCMS
- May 6 – Board Work Session: Presentation of Draft 2 of Multi-year Student Assignment Plan
- May 7, 6:00 – Public Engagement/Input Meetings. Area III at Southern Middle School
- May 8, 6:00 – Public Engagement/Input Meetings. Areas I & II at New Century Middle School
- May 14, 5:30 – Advisory Committee meeting at NCMS
- June 11, 5:30 – Advisory Committee meeting at NCMS
- July 30, 5:30 – Advisory Committee meeting at NCMS
- August 5 Work Session – Progress Update
- September 3 – Board Work Session: Presentation of Superintendent’s Recommendation of Multi-year Student Assignment Plan
- Mid-September – Public Hearing
- October 14 – Regular Business Meeting: Board action on Multi-year Student Assignment Plan

Addendum

DATA TABLE LEGEND

FULL DATA TABLES

2018-19 MCS MEMBERSHIP FORECAST (DRAFT)

COUNTY-WIDE STUDENT DENSITY MAPS

SCHOOL TRANSFER DATA

CHARTER SCHOOL DATA

OTHER SCHOOL SYSTEMS IN MOORE COUNTY

Data Table Legend

- Minority %: Calculated using MCS 2018-19 student geocode
- Month-2 ADM: NC DPI Month-2 Average Daily Membership for 2017-18 and 2018-19
- 2018-19 Membership (geocode)
 - Resident: Number of geocoded students residing in base
 - Base: Number of geocoded base students residing in base
 - Base %: Percentage of geocoded base students in resident students
- Non-Base 2018-19: (2018-19 Month-2 ADM) – (2018-19 Base)
- Forecast Membership 2020-21, 2022-23 and 2024-25: Forecasted resident membership
- Resident Growth: Forecasted resident growth by 2024-25 in base attendance area
- Capacity 2018-19: Provided by MCS, Summary of Existing Facilities 20180522
- Utilization 2018-19: 2018-19 Month-2 ADM / Capacity
- Capacity 2020-21, 2022-23 and 2024-25: Building capacities as supplied by MCS, includes new schools
- Utilization 2020-21, 2022-23 and 2024-25: (Base + Non-Base) / Capacity
- Proficiency, English Language Arts (ELA) and Math, 2015-16, 2016-17 and 2017-18: Percentage of geocoded resident students by year that are proficient in subject. *Data source: EOG scores for grades 3-8 provided by MCS.*

Full Data Tables – Middle School

Current 2019-20	Minority % 2019-20	Month-2 ADM		2018-19 MCS Membership (geocode)			Non-Base 2018-19	Forecast MCS Membership					Capacity 2018-19	Utilization 2018-19	Capacity 2019-20	Utilization 2019-20	Capacity 2020-21	Utilization 2020-21	Capacity 2022-23	Utilization 2022-23	Capacity 2024-25	Utilization 2024-25	Prof - ELA 2017-18	Prof - ELA 2016-17	Prof - ELA 2015-16	Prof - Math 2017-18	Prof - Math 2016-17	Prof - Math 2015-16	Minority	Util - 2022-23	Prof - ELA					
		2017-18	2018-19	Resident	Base	Base %		2019-20	2020-21	2022-23	2024-25	Growth																								
Crains Creek MS	34%	396	419	432	404	94%	15	426	436	421	424	-8	478	88%	478	86%	478	88%	478	86%	478	86%	478	86%	59%	57%	54%	51%	48%	49%	Max >	63%	Max >	140%	Max >	76%
Elise MS	55%	216	238	252	221	88%	17	236	229	210	181	-71	270	88%	270	83%	270	81%	270	75%	270	65%	270	65%	47%	48%	49%	46%	50%	46%	Min >	22%	Min >	75%	Min >	47%
Highfalls ES	22%	97	99	86	73	85%	26	94	90	88	91	5	123	81%	123	86%	123	84%	123	82%	123	84%	123	84%	62%	64%	55%	59%	61%	61%	Range >	41	Range >	65	Range >	30
New Century MS	25%	564	634	616	577	94%	57	640	660	642	710	94	700	91%	700	94%	700	96%	700	94%	700	103%	700	103%	69%	69%	69%	60%	61%	65%						
Southern MS	63%	667	694	707	676	96%	18	689	670	636	621	-86	700	99%	700	97%	700	94%	700	89%	700	87%	700	87%	51%	51%	50%	41%	39%	42%						
West Pine MS	25%	846	838	828	810	98%	28	862	915	973	1036	208	700	120%	700	124%	700	132%	700	140%	700	149%	700	149%	76%	76%	75%	73%	72%	72%						
Westmoore ES	27%	107	111	102	94	92%	17	108	101	95	96	-6	136	82%	136	86%	136	81%	136	77%	136	78%	136	78%	63%	57%	55%	40%	52%	50%						
		2893	3033	3023	2855	94%	178	3055	3101	3065	3159	136	3107	98%	3107	99%	3107	81%	3107	99%	3107	102%	3107	102%												

2019-20

Full Data Tables – High School

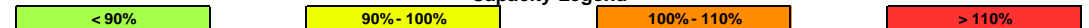
Current 2019-20	Minority % 2019-20	Month-2 ADM		2018-19 MCS Membership (geocode)			Non-Base 2018-19	Forecast MCS Membership					Capacity		Utilization		Capacity		Utilization		Capacity		Utilization		Prof - ELA		Prof - Math		Prof - Math		Minority	Util - 2022-23		Prof - ELA	
		2017-18	2018-19	Resident	Base	Base %		2019-20	2020-21	2022-23	2024-25	Growth	2018-19	2018-19	2019-20	2019-20	2020-21	2020-21	2022-23	2022-23	2024-25	2024-25	2017-18	2016-17	2015-16	2017-18	2016-17	2015-16	2017-18	2016-17		2015-16	Max >	Min >	Max >
North Moore HS	41%	560	533	503	488	97%	45	513	547	566	519	16	559	95%	559	97%	559	103%	559	106%	559	98%	54%	53%	52%	47%	53%	50%	Max >	41%	Max >	135%	Max >	65%	
Pinecrest HS	38%	2120	2120	2146	2063	96%	57	2092	2114	2147	2185	39	1650	128%	1650	125%	1650	127%	1650	129%	1650	131%	65%	64%	63%	58%	57%	58%	Min >	27%	Min >	106%	Min >	54%	
Union Pines HS	27%	1366	1356	1381	1292	94%	64	1384	1377	1475	1512	131	1068	127%	1068	127%	1068	127%	1068	135%	1068	138%	64%	64%	63%	56%	56%	59%	Range >	14	Range >	29	Range >	11	
		4046	4009	4030	3843	95%	166	3989	4038	4188	4216	186	3277	122%	3277	121%	3277	123%	3277	127%	3277	127%	3277	128%											
<i>2019-20</i>																																			
Draft 1 - HS																																			
2022-23																																			
North Moore HS	42%	560	533	561	543	97%	45	571	605	625	579	18	559	95%	559	107%	559	113%	559	116%	559	108%	54%	53%	52%	48%	53%	50%	Max >	42%	Max >	133%	Max >	65%	
Pinecrest HS	37%	2120	2120	2113	2031	96%	57	2059	2081	2114	2152	39	1650	128%	1650	123%	1650	125%	1650	127%	1650	129%	65%	65%	64%	58%	57%	58%	Min >	27%	Min >	116%	Min >	54%	
Union Pines HS	27%	1366	1356	1356	1269	94%	64	1359	1352	1449	1485	129	1068	127%	1068	125%	1068	124%	1068	133%	1068	136%	65%	64%	63%	56%	56%	59%	Range >	15	Range >	17	Range >	11	
		4046	4009	4030	3843	95%	166	3989	4038	4188	4216	186	3277	122%	3277	121%	3277	123%	3277	127%	3277	127%	3277	128%											
<i>HS 01 (rev 1) - 20190329</i>																																			
Draft 2 - HS																																			
2022-23																																			
North Moore HS	42%	560	533	572	548	96%	45	582	616	637	591	19	559	95%	559	108%	559	114%	559	117%	559	109%	54%	53%	52%	48%	53%	50%	Max >	42%	Max >	134%	Max >	65%	
Pinecrest HS	37%	2120	2120	2095	2018	96%	57	2041	2063	2096	2134	39	1650	128%	1650	123%	1650	124%	1650	126%	1650	128%	65%	65%	64%	58%	57%	58%	Min >	26%	Min >	117%	Min >	54%	
Union Pines HS	26%	1366	1356	1363	1277	94%	64	1366	1359	1455	1491	128	1068	127%	1068	126%	1068	125%	1068	134%	1068	137%	65%	65%	63%	56%	56%	59%	Range >	16	Range >	16	Range >	11	
		4046	4009	4030	3843	95%	166	3989	4038	4188	4216	186	3277	122%	3277	121%	3277	123%	3277	127%	3277	127%	3277	128%											
<i>HS 01 (rev 2) - 20190505</i>																																			

Moore County Schools Membership Forecast *DRAFT*

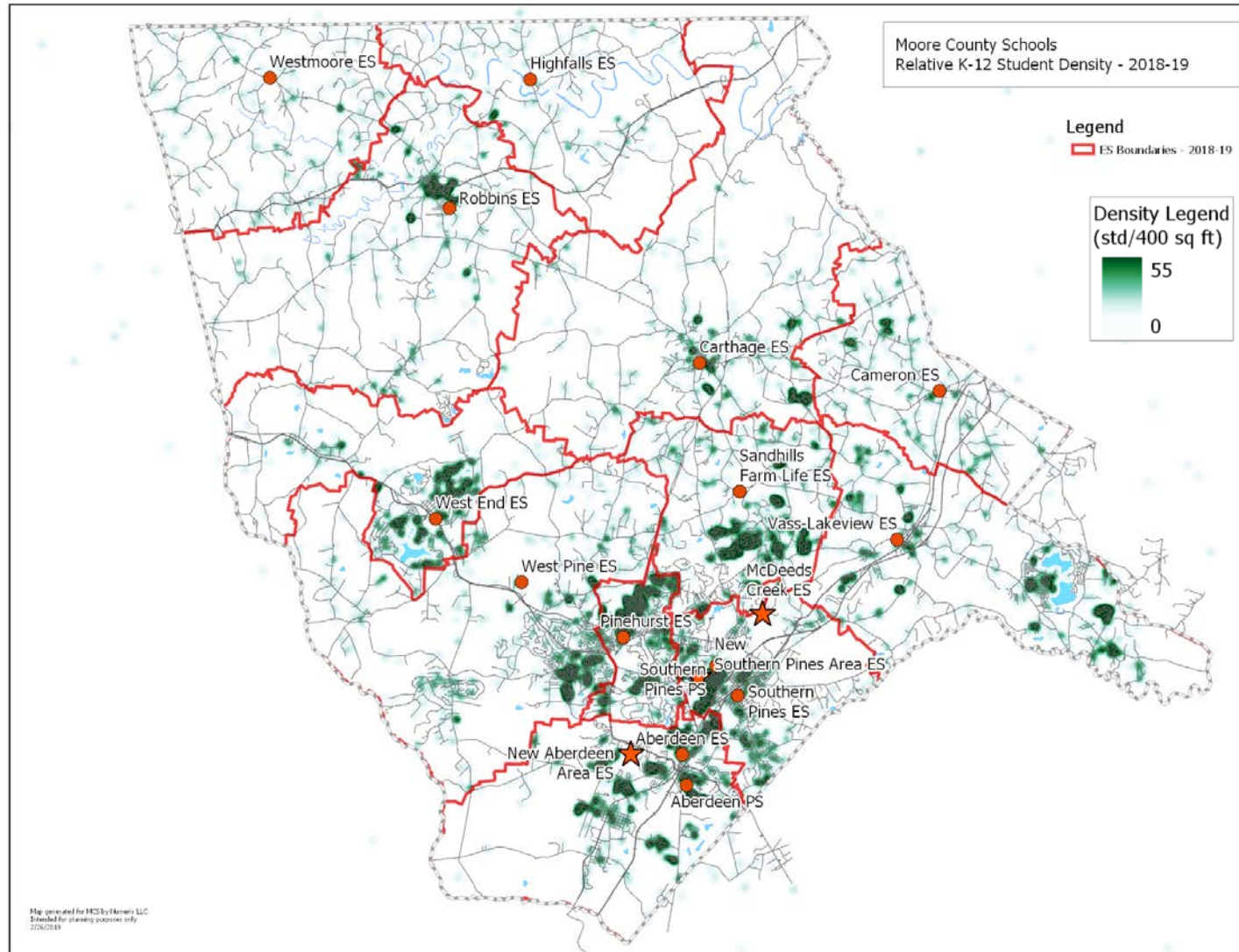
1. Month-2 ADM supplied by NC DPI. Pre-K not included.
2. Building capacities supplied by MCS, 9/27/2017
3. Forecast includes impacts from residential growth as described in the 2017-18 ORED Land Use Study, January 2018.
4. Forecast generated by Numerix Cohort-Feeder model. Projected RLB annual gain = 1.5%, 2018 to 2023. Overall K-12 annual gain = 1.57%, 2019-20 to 2028-29.

Area	Grades	Capacities 2018-19	Pre-K 2018-19	Historic Month-2 ADM					Month-2 2018-19	Forecasted Month-2 ADM									
				2013-14	2014-15	2015-16	2016-17	2017-18		2019-20	2020-21	2021-22	2022-23	2023-24	2024-25	2025-26	2026-27	2027-28	2028-29
Area I																			
Cameron Elementary	K-5	284		251	254	250	256	254	260	267	270	289	299	306	303	310	315	318	323
Carthage Elementary	K-5	440		415	382	383	361	368	375	384	397	396	424	425	429	438	446	450	457
Sandhills Farm Life Elementary	K-5	550		633	643	665	689	726	740	748	785	809	845	857	880	898	915	923	936
Vass-Lakeview Elementary	K-5	600		633	630	639	635	627	600	612	637	672	709	752	806	824	839	846	858
Crain's Creek Middle	6-8	478		417	413	411	383	396	419	426	436	428	421	415	424	455	491	537	551
New Century Middle	6-8	700		562	599	587	605	564	634	640	660	665	642	687	710	760	763	784	805
Union Pines High	9-12	1068		1275	1318	1355	1350	1366	1356	1384	1377	1401	1475	1472	1512	1480	1508	1556	1615
Area I SubTotal		4120	0	4186	4239	4290	4279	4301	4384	4461	4562	4659	4815	4914	5064	5165	5276	5413	5546
Area II																			
Highfalls Elementary	K-8	350		298	290	275	266	268	251	240	231	226	226	226	234	234	243	250	254
Westmoore Elementary	K-8	400		381	365	337	312	305	290	283	267	254	251	245	251	260	262	268	273
Robbins Elementary	K-5	600		452	434	443	447	417	392	384	379	374	386	404	408	417	424	428	434
Elise Middle	6-8	270		225	220	194	207	216	238	236	229	224	210	191	181	187	202	205	211
North Moore High	9-12	559		610	639	631	574	560	533	513	547	564	566	555	519	471	440	421	418
Area II SubTotal		2179	0	1966	1948	1880	1806	1766	1704	1657	1654	1642	1638	1621	1594	1569	1570	1573	1591
Area III																			
Aberdeen Primary	K-2	285		319	327	320	298	294	298	301	308	324	332	339	340	345	350	355	361
Aberdeen Elementary	3-5	440		313	304	321	309	327	301	312	298	295	297	304	320	328	335	336	341
Pinehurst Elementary	K-5	367		509	519	531	527	592	606	616	631	639	656	654	678	691	704	710	721
Southern Pines Primary	K-2	400		465	453	374	339	308	329	314	325	327	335	342	343	349	354	359	365
Southern Pines Elementary	3-5	590		413	418	384	364	329	324	321	313	323	308	320	321	330	336	337	343
West End Elementary	K-5	500		399	438	439	467	452	508	518	493	529	523	545	543	554	564	569	577
West Pine Elementary	K-5	600		548	559	567	597	568	587	619	645	700	733	779	780	797	811	818	830
Southern Middle	6-8	700		774	678	682	659	667	694	689	670	628	636	614	621	609	627	645	662
West Pine Middle	6-8	700		843	821	815	818	846	838	862	915	933	973	946	1036	1057	1108	1129	1161
Pinecrest High	9-12	1650		2154	2145	2217	2163	2120	2120	2092	2114	2153	2147	2229	2185	2230	2238	2264	2346
Area III SubTotal		6232	0	6737	6662	6650	6541	6503	6605	6644	6712	6851	6941	7072	7167	7289	7428	7524	7706
Special/Alternative																			
The Community Learning Center @ Pinckney	7-12	n/a		21	43	11	54	59	66	66	66	66	66	66	66	66	66	66	66
System Total (excluding Spec/Alt)		12531	0	12889	12849	12820	12626	12570	12693	12761	12928	13152	13395	13608	13825	14022	14274	14510	14842
System Total (including Spec/Alt)		12531	0	12910	12892	12831	12680	12629	12759	12827	12994	13218	13461	13674	13891	14088	14340	14576	14908

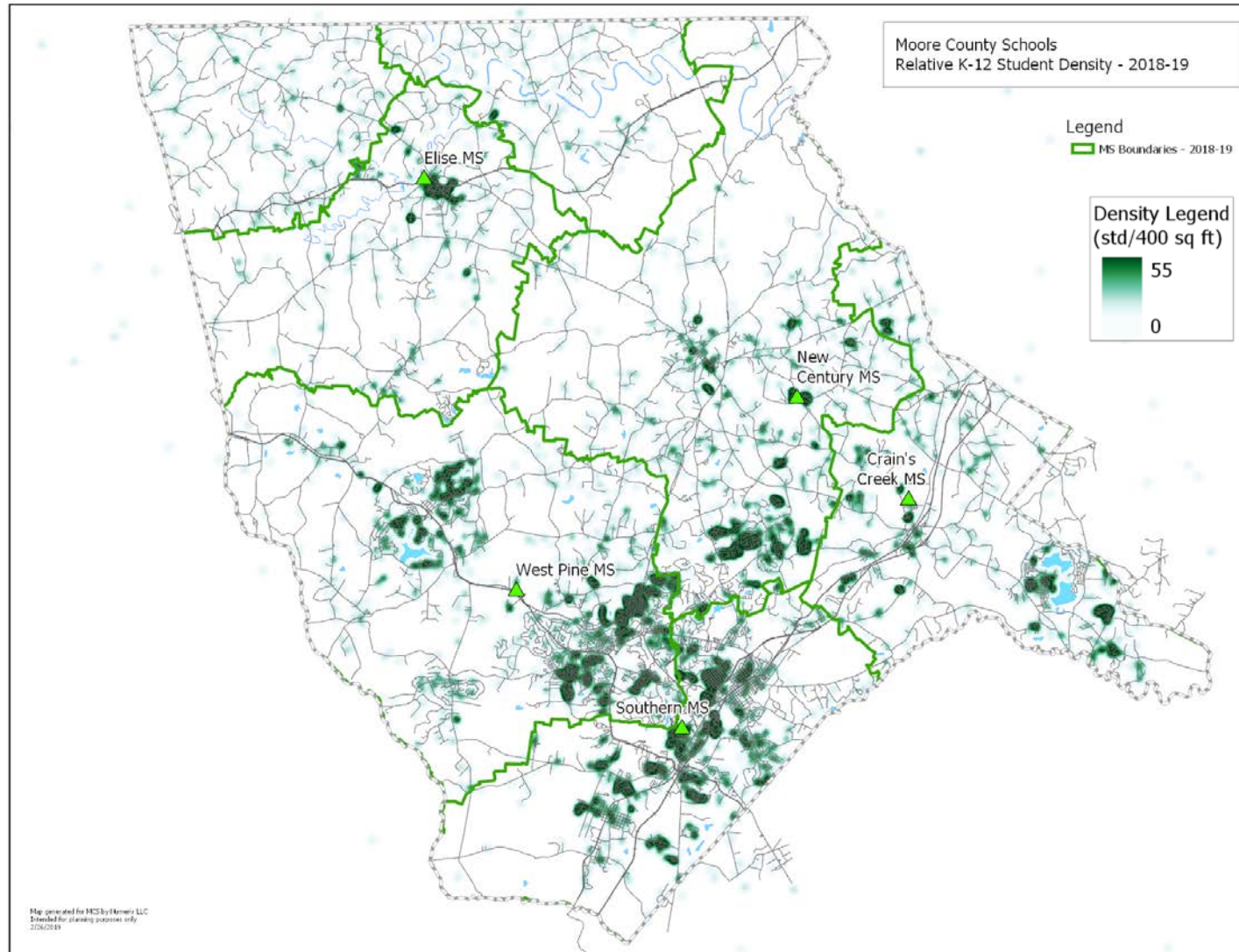
Capacity Legend



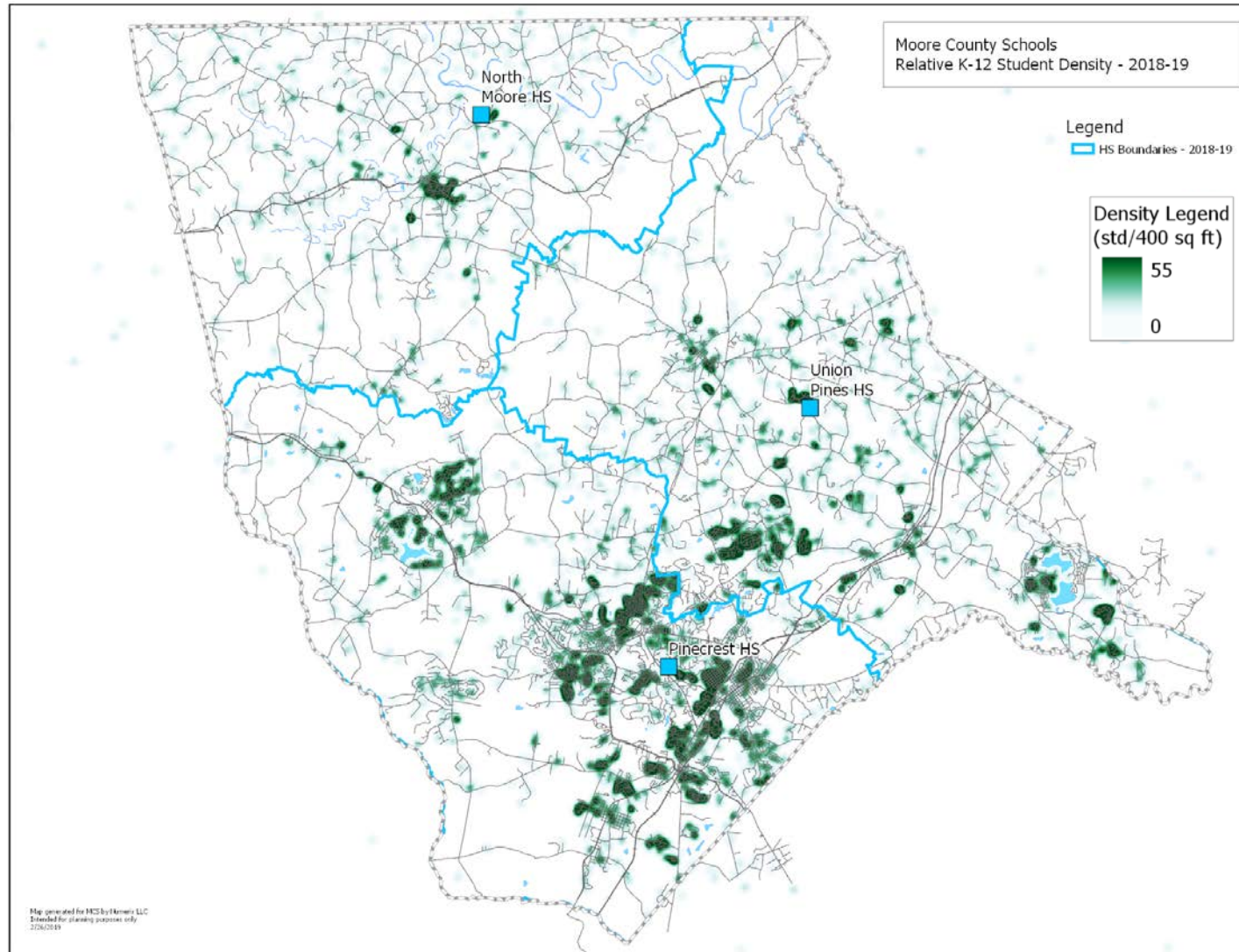
Student Density by Residence – ES Base



Student Density by Residence – MS Base



Student Density by Residence – HS Base



Transfer Report – 2017-2018

School	Student Transfer Requests within Moore County	Student Transfer Requests within Moore County	Student Transfer Requests from Another County	Student Transfer Requests from Another County	Students of Moore County Employees	Students of Moore County Employees	Students Denied	Students Denied
	2016-17	2017-18	2016-17	2017-18	2016-17	2017-18	2016-17	2017-18
Aberdeen Elementary	6	5	1	1	2	1	1	
Aberdeen Primary	1	1	5	5		2		
Cameron Elementary	6	11	11	5	6	7	1	
Carthage Elementary	12	24				5		1
Crain's Creek Middle	9	19	6	1	8	9	1	
Elise Middle	6	4	1	1	3	3		
Highfalls Elementary	52	61	9	11	23	21	1	1
New Century Middle	23	26	4	2	11	11		5
North Moore High	29	29	20	14	8	13	2	
Sandhills Farm Life Elementary	34	35	2	2	12	18	1	
Southern Middle	12	13	9	7	4	5	2	1
Pinecrest High	10	22	15	14	8	10	3	2
Pinehurst Elementary	49	47			14	17		7
Southern Pines Elementary	55	40	3		1	4	2	1
Southern Pines Primary	30	21	1	2	4	6		
Robbins Elementary	13	17			5	9		
Union Pines High	49	47	13	9	16	20	1	2
Vass-Lakeview Elementary	19	18	7	5	15	15		1
West End Elementary	33	41	4	4	8	14		4
West Pine Elementary	30	15	6	4	19	14	2	
West Pine Middle	19	21	3	2	8	14	3	2
Westmoore Elementary	26	32	10	3	9	8		
TOTALS	523	549	130	92	184	226	20	27

Transfer Report – 2017-2018

School	Applied for Tuition Waiver	Tuition Waived	Tuition Reduced (\$585)	Tuition Reduced (\$1171)	Tuition Reduced (\$1755)	Owe Full Tuition (\$2343)	Out of County Students of MCS Employees Tuition N/A
Aberdeen Elementary							1
Aberdeen Primary	3	1	1 (paid)	1 (paid)		2 (back to Hoke Co.)	1
Cameron Elementary						1 (paid)	4
Carthage Elementary							
Crain's Creek Middle							1
Elise Middle							1
Highfalls Elementary	1	1					8
New Century Middle							2
North Moore High	7	2	1 (paid)	2 (all paid)	1 (paid)	4 (all paid – 1 applied for waiver but was denied)	4
Sandhills Farm Life Elementary							2
Southern Middle	1	1				1 (back to Hoke Co.)	3
Pinecrest High	6	4		2 (all paid)			4
Pinehurst Elementary							
Southern Pines Elementary							
Southern Pines Primary							2
Robbins Elementary							
Union Pines High	1		1 (paid)			2 (all paid)	3
Vass-Lakeview Elementary							5
West End Elementary	1		1 (paid)			3 (all paid)	1
West Pine Elementary							4
West Pine Middle							2
Westmoore Elementary							2
TOTALS	20	9	4	5	1	13	50

OUT OF BOUNDARY 2017-2018 SY	SENDING SCHOOLS																				Receiving Total			
	ABE	APS	CAM	CAR	CCM	EMS	HFE	NCM	NMH	PES	PHS	RES	SFE	SMS	SPE	SPP	UPH	VLE	WEE	WME		WPE	WPM	
RECEIVING SCHOOLS	ABE			1						2		3	1		6			1			2		16	
	APS											1				2							3	
	CAM				4								1		3	1		2					11	
	CAR	3	1	11							1	5	16		2			2				3	44	
	CCM								13					2								1	16	
	EMS								1					1						3			5	
	HFE	1			1		17		4			25		1						10			59	
	NCM					7	4	1						9								11	32	
	NMH										17							9					26	
	PES	2	4		1								1		1	3			2			22	36	
	PHS								1									39					40	
	RES	1	2	1	3			3			3		2			1			2	8	2		28	
	SFE	4	3	3	10					6	1				5	4		4				9	49	
	SMS					3	2		3														4	12
	SPE	28		1									1						1			1	32	
	SPP		19	1							3	1	4						2			2	32	
	UPH									5		46											51	
	VLE	2		8	11						2		5		5	2						1	36	
	WEE	3	5		2			1			7	14	3						3			19	57	
	WME						14	3				20		1									38	
WPE	2	2		2			1			5	2	1		2	2			4				23		
WPM					2	5	1	13					15									36		
Total Out	46	36	26	34	12	42	10	34	6	29	63	72	35	29	24	15	48	15	8	21	61	16	682	
Total In	16	3	11	44	16	5	59	32	26	36	40	28	49	12	32	32	51	36	57	38	23	36	682	
Net Gain	-30	-33	-15	10	4	-37	49	-2	20	7	-23	-44	14	-17	8	17	3	21	49	17	-38	20	0	

OUT OF BOUNDARY 2018-2019 SY		SENDING SCHOOLS																				Receiv ng Total		
		AES	APS	CA M	CAR	CCM	EMS	HFE	NC M	NM H	PES	PHS	RES	SFL	SMS	SPE	SPP	UPH	VLE	WEE	WM E		WPE	WPM
RECEIVING SCHOOLS	AES									1					9						1		11	
	APS									1						1						2	4	
	CAM				1								1		1			3					6	
	CAR	2	2	8				1			6		6	10		4			7	1	1	2	50	
	CCM								8					4									12	
	EMS							2						2							3		7	
	HFE	1			6	1	15		3				24	1					1	15		3	70	
	NCM					12	1	1							10								10	34
	NMH												11					14						25
	PES	4	3		1									1		3	1					17	30	
	PHS									1								35						36
	RES	1			2			4			3			2						1	13	2		28
	SFL	3	5	2	9						1		1			8	4		4			8		45
	SMS					1			1														7	9
	SPE	25		1							1													27
	SPP		15	1	2						4		1	3					3	2		1		32
	UPH									5		40												45
	VLE			6	5									14		3						1		29
	WEE	2	5		2			2			5		12	5		2	2		2		2	23		64
	WME						14		2				18											34
	WPE	5	1		2						12		1	1		4	2			6				34
	WPM					2	6	2	7						10									27
	Total Out	43	31	18	30	16	36	12	21	6	34	51	63	37	27	34	10	49	19	11	34	57	20	659
Total In	11	4	6	50	12	7	70	34	25	30	36	28	45	9	27	32	45	29	64	34	34	27	659	
Net Gain	-32	-27	-12	20	-4	-29	58	13	19	-4	-15	-35	8	-18	-7	22	-4	10	53	0	-23	7	0	

Charter School Impact on MCS

Charter transfers by city	
Aberdeen	285
Cameron	40
Carthage	61
Eagle Springs	7
Foxfire Village	1
Jackson Springs	4
Lakeview	1
Pinebluff	42
Pinehurst	55
Raeford	2
Robbins	13
Seagrove	14
Southern Pines	212
Vass	37
West End	32
Whispering Pines	40
Total	846

Charter transfers by grade	
KI	144
1	120
2	102
3	92
4	69
5	89
6	47
7	72
8	47
9	16
10	29
11	15
12	4
Total	846

Data source: MCS Finance Dept., January 2019

Other School Systems in Moore County

Home Schools (2017-18)

- Number of home schools: 946
- Estimated number of students: 1,614

Data source: <https://ncadmin.nc.gov/citizens/home-school/non-public-education-resources-stats>

Private Schools (2017-18)

- Number of private schools: 13

Data source: <https://ncadmin.nc.gov/documents/2018-conventional-private-school-stats>

Grade	Enrollment
KI	145
1	122
2	123
3	123
4	116
5	95
6	97
7	91
8	96
9	65
10	55
11	64
12	34
Total	1,226